

Linne

Swedish 16/2, Bockens line linen makes beautiful towels and runners and they are easy to weave.

We have chosen half bleached for the main color with black and rust. Packaged on easy to use tubes, select from the 68 available colors. The towel and runner shown here are threaded with 8 shafts. The towel is woven with 4 treadles, the runner with 8. You need 15 inches weaving width and 320 heddles.

Warp width: 13 3/8 inches
Finished width: 12 1/2 inches
Warp ends/inch): 24
Reed: 12
Wefts/inch: plain weave: 18
Twill: 24
of threads in a heddle: 1
of threads in a dent: 2
Shrinkage: expect 6% in length

Warp Color Order

20 black,
80 half bleached,
20 black,
80 rust
20 black,
80 half bleached,
20 black,
320 total

You can make any of these stripes wider by adding units of 4. It is easiest to add to the center block. Check the total yardage you have for the center color.

Wind 3 bouts	total
Bout 1: 20 black, 80 1/2 bl,	100
Bout 2: 20 black, 80 rust, 20 black	120
Bout 3: 80 1/2 bl, 20 black	100

Hems can be woven in any of the colors. The towel's hem is woven in black with four treadles. Weave 1 3/4 inch. Check the total yardage you have for the center color.



Threads you need

One tube of each color, 1/2 bleached (natural white, 8.8 oz) plus two colors, 4.4 oz each, will make a four yard warp with enough left over for weft. This will give you four towels or two, 48 inch long runners.

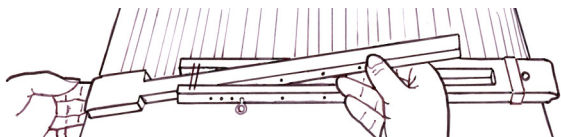


Hems and stripes in 8 shafts

The hem and the horizontal stripes on the runner are 20 wefts, woven with 8 shafts, alternating the two twill blocks. See p 3.

Choice of Threading

Choose plain weave, twill or an 8 shaft, 2 block, broken twill



We recommend that you use a 12-16 inch temple. For more information about using a temple, see page 3

Linne in Eight Shaft Weave

Threading Instructions

Part 1 and part 2 are threaded alternately as follows:

Part	# of times to thread	color	
1	1 time	black	Black stripe
2	1 time	black	
1	1 time	black	
2	1 time	black	
1	1 time	black	
2	5 times	white	
1	10 times	white	
2	5 times	white	

Repeat black stripe

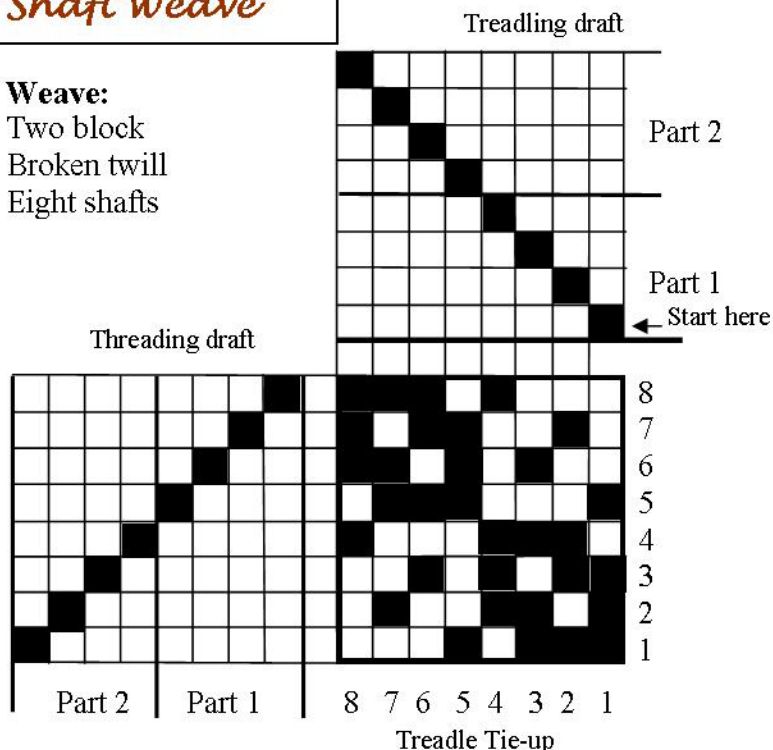
2	5 times	rust
1	10 times	rust
2	5 times	rust

Repeat black stripe

2	5 times	white
1	10 times	white
2	5 times	white

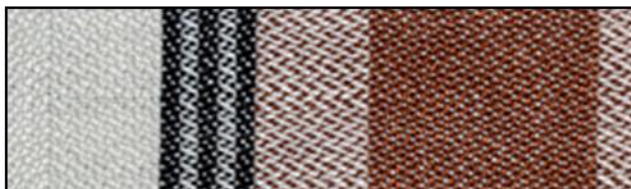
Repeat black stripe

Weave:
Two block
Broken twill
Eight shafts



Four Treadle Weave

Weave with only the four treadles of Part 1



To weave Decide to weave with four treadles (above and see the photo of the towel) or use all eight, as in the photo of the runner. A floating selvage is not needed for weaving. Weave the hem. Decide if you will also weave some weft stripes.

Weave as follows:

If you weave with all 8 treadles, alternate the two parts of the treading draft the same way they are alternated in the threading. Start with Part 1 and weave it one, two or three or more times. Then weave Part 1, deciding how many times you would like to weave it.

If you want to square the blocks:

Black hem and stripes (approx 3/4 in) in the runner are woven with 20 wefts (Blocks 1,2,1,2,1)

The runner is woven with Block 1 woven 5 times (about 3/4 inch) and Block 2 woven 10 times, (about 1 5/8 inches).

Hold a wet cloth on the thread to dampen it as you wind the thread for your shuttle. This will make the beating easier and the weave tighter.

Eight treadle weave

Treading: Alternate parts 1 & 2
Part 1, repeat 10 times
Part 2, repeat 5 times

